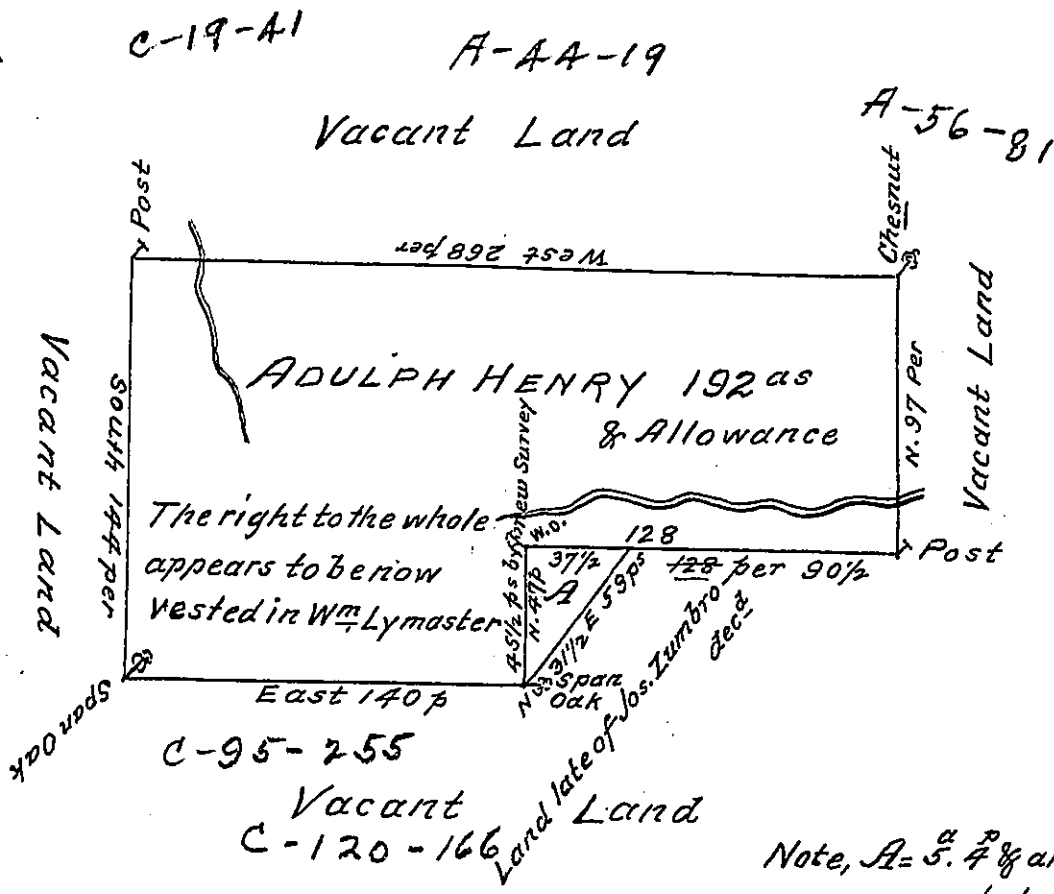


Note: The Variation on running the piece A found to be 4" Westerly compared with the Old Survey adj^g - therefore to correspond with y^e Old Survey the line N 35 1/2 E by the new Survey must be called N 3 1/2 E as above.



The Draught of a Tract of Land Surveyed to Adulph Henry By Warrant Dated y^e 21st Day of Octo^r 1740 in Berne Township in Lancaster County Containing One Hundred Ninety Two Acres Beside y^e Usual Allowance

y^e 7th of 8th 1743 now Berks County

Sam Lightfoot

No 133

IN TESTIMONY that the above is a copy of the original remaining on file in the Department of Internal Affairs of Pennsylvania, made conformably to an Act of Assembly approved the 16th day of February, 1833, I have hereunto set my Hand and caused the Seal of said Department to be affixed at Harrisburg, this eighth day of August 1905.

Loac P Brown
Secretary of Internal Affairs.